

*Making notes*  
**Resources**  
Fabric: [www.croftmill.co.uk](http://www.croftmill.co.uk)

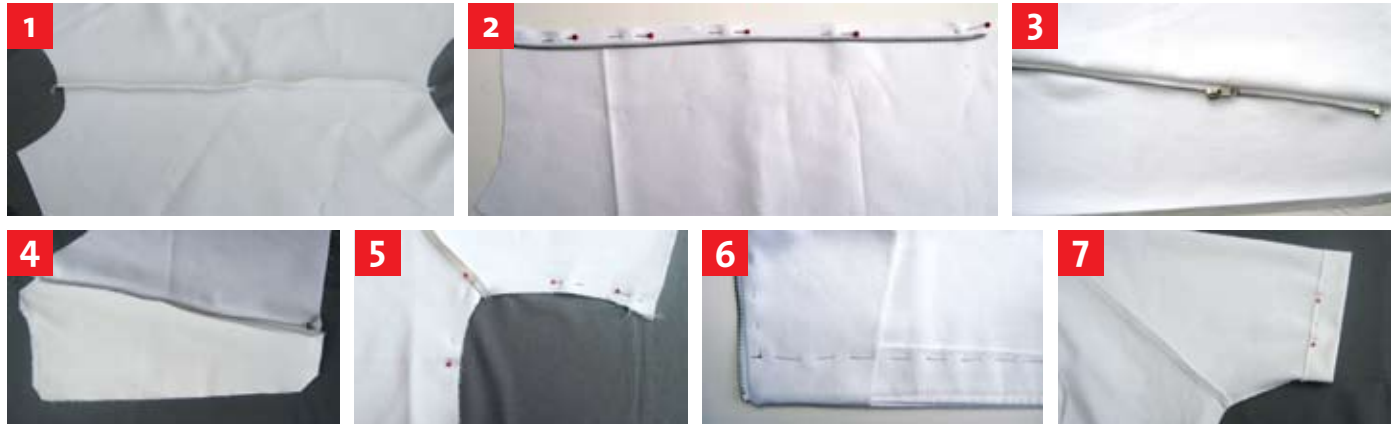


# Biker jacket

BIKER-STYLE SUMMER JACKET IN  
COTTON DRILL WITH RAGLAN SLEEVES.  
BY SUZANNE ROWLAND

**You will need:**

- 1.5m cotton drill
- Thread
- 16in metal open end zip
- 50cm medium weight iron-on interfacing
- Sewing machine
- Overlocker (optional)
- Iron



1. Print out the pattern template (p104). Fold the fabric in half lengthways and pin on the pattern making sure the straight grain line marked on the pattern is parallel to the fold of the fabric. Cut out all pieces.
2. Apply iron-on interfacing to the neck facing, bottom facings and to the front facings.
3. To attach the sleeves to the back, with right sides facing, line up the raw edges, match the notches, pin and machine in place with a 1cm seam. Overlock the edges together (image 1).
4. To make up the right front, on the right side of the fabric place the zip face down along the inside of the front edge (image 2). The top stop should be 1.5cm from the top raw edge. Pin and tack in place. Add a zipper foot to your machine and stitch down the centre of the zip tape and along the hem.
5. Take the facing and with right sides together, line the edge of the facing up with the front to sandwich the zip. Machine through all layers sewing close to the teeth.
6. To make up the left front, undo the zip completely and place the separated half of zip face down with the tape running along the front edge with the top stop 2cm from the top raw edge. Pin, tack and machine down the centre of the zip tape.
7. Place the facing section over the front, sandwiching the zip and matching raw edges. Pin, tack and machine close to the zip teeth (image 3).
8. Take the left facing and with right sides together, pin and machine along the front edge and along the hem, stopping 1cm from the edge. Layer the seam allowance at the neck edge and snip at 1cm intervals (image 4). Press along the edges.
9. Overlock the long raw edge of the facing.
10. To join the front sections to the raglan sleeves, pin, machine and overlock the seams together. Press all sleeve seams towards the centre of the sleeves.
11. For the side seams, with right sides facing, match up the raw edges. Make sure the sleeve seams lie on top of each other, keeping them in place by inserting a pin through the seams. Stitch a 1cm seam, overlock the seam together and press towards the back of the jacket (image 5).
12. To add the neck facing, firstly overlock the bottom curved edge. To join, match each short end to the front facings. Machine in place and press the seams to one side. With right sides facing, pin the facing around the edge of the neck. Machine with a 1cm seam. Snip at 1cm intervals and press the facing into position. To make sure it stays in place, understitch by sewing the seam allowance to the facing only, working from the right side and sewing close to the seamline.
13. Join the bottom facings at the side seams. Press the seams open and overlock along the top edge only.
14. With raw edges matching, place the bottom facing with right sides together along the bottom edge of the jacket. Lay the seams on top of each other, keep in place with a vertical pin through all seams. Machine the facing in place. Press upwards and understitch.
15. Pin and tack the bottom facing 3.5cm up from the bottom edge (image 6). Tack a line all around the jacket to follow for topstitching, the line is 1cm at the front edges and at the neck, 3.5cm elsewhere. Topstitch following your tacking guide.
16. To finish the sleeve hem, overlock the edge and press under 3.5cm, pin and tack. Machine 3cm from the sleeve edge around each sleeve (image 7). Remove any trapped tacking with tweezers.